



Remark:

- 1) The testing results relate only to the items tested.
- 2) The test report shall not be reproduced except in full, without written approval of the laboratory.
- 3) This test report only allows to be revised within three years from its original issued date unless a further updating to the standard or requirement is noticed.
- 4) This report is for the exclusive use of Intertek's Client and is provided pursuant to the agreement between Intertek and its Client. Intertek's responsibility and liability are limited to the terms and conditions of the agreement. Intertek assumes no liability to any party, other than to the Client in accordance with the agreement, for any loss, expense or damage occasioned by the use of this report. Only the Client is authorized to permit copying or distribution of this report and then only in its entirety. Any use of the Intertek name or one of its marks for the sale or advertisement of the tested material, product or service must first be approved in writing by Intertek. The observations and test results in this report are relevant only to the sample tested. This report by itself does not imply that the material, product, or service is or has ever been under an Intertek certification program.
- 5) When determining the test conclusion, the Measurement Uncertainty of test has been considered.

**Required Information:**

1. Product type	Notebook Computer (Slate Computer)
2. Product category	Category C
3. Year of manufacture	--
4. E <sub>TEC</sub> value (kWh) and capability adjustments applied when all discrete graphics cards (dGfx) are disabled and if the system is tested with switchable graphics mode with UMA driving the display	No discrete graphics cards
5. E <sub>TEC</sub> value (kWh) and capability adjustments applied when all discrete graphics cards (dGfx) are enabled	No discrete graphics cards
6. Idle state power demand (Watts)	N/A
7. Sleep mode power demand (Watts)	3.00 watts
8. Sleep mode with WOL enabled power demand (Watts) (where enabled)	3.70 watts
9. Off mode power demand (Watts)	1.00 watts
10. Off mode with WOL enabled power demand (Watts) (where enabled)	1.70 watts
11. Internal power supply efficiency at 10 %, 20 %, 50 % and 100 % of rated output power	--
12. External power supply efficiency	--
13. Noise levels (the declared A-weighted sound power level) of computer	--
14. The minimum number of loading cycles that the batteries can withstand (applies only to notebook computers)	--

15. The measurement methodology used to determine information mentioned in points (4) to (14)	--
16. Sequence of steps for achieving a stable condition with respect to power demand	--
17. description of how sleep and/or off mode was selected or programmed	--
18. Sequence of events required to reach the mode where the equipment automatically changes to sleep and/or off mode	--
19. The duration of idle state condition before the computer automatically reached sleep mode, or another condition which does not exceed the applicable power demand requirements for sleep mode	--
20. The length of time after a period of user inactivity in which the computer automatically reaches a power mode that has a lower power demand requirement than sleep mode	--
21. The length of time before the display sleep mode is set to activate after user inactivity	--
22. user information on the energy-saving potential of power management functionality	--
23. user information on how to enable the power management functionality	--

24. for products with an integrated display containing mercury, the total content of mercury as X,X mg

--

25. Test parameters for measurements:  
 - test voltage in V and frequency in Hz  
 - total harmonic distortion of the electricity supply system  
 - information and documentation on the instrumentation, set-up and circuits used for electrical testing

230 Vac, 50 Hz

26. If a notebook computer is operated by battery/ies that cannot be accessed and replaced by a non-professional user, manufacturers shall provide in the technical documentation, and make available on free-access websites and on the external packaging of the notebook computer, the following information “The battery[ies] in this product cannot be easily replaced by users themselves”. The information provided on the external packaging of the notebook computer shall be clearly visible and legible and it shall be provided in all the official languages of the country where the product is marketed.

--

## **Summary of test results:**

### **Test condition 1:**

**Notebook computer with battery (mfr: FUJIAN UNITED CORPORATION CO., LTD UNITED; model: R11AH) + Adapter(mfr: FSP GROUP INC.; model: FSP065-RAB)**

When tested at 230 Vac, 50 Hz:

1. The annual total energy consumption ( $E_{TEC}$  in kWh/year) is 22.93 kWh/year, less than 36 kWh/year.
2. SLEEP MODE is 0.44 W, less than 3.0 W.
3. LOWEST POWER STATE is -- W, less than 0.50 W.
4. OFF MODE is 0.28 W, less than 1.00 W.

### **Critical Component List**

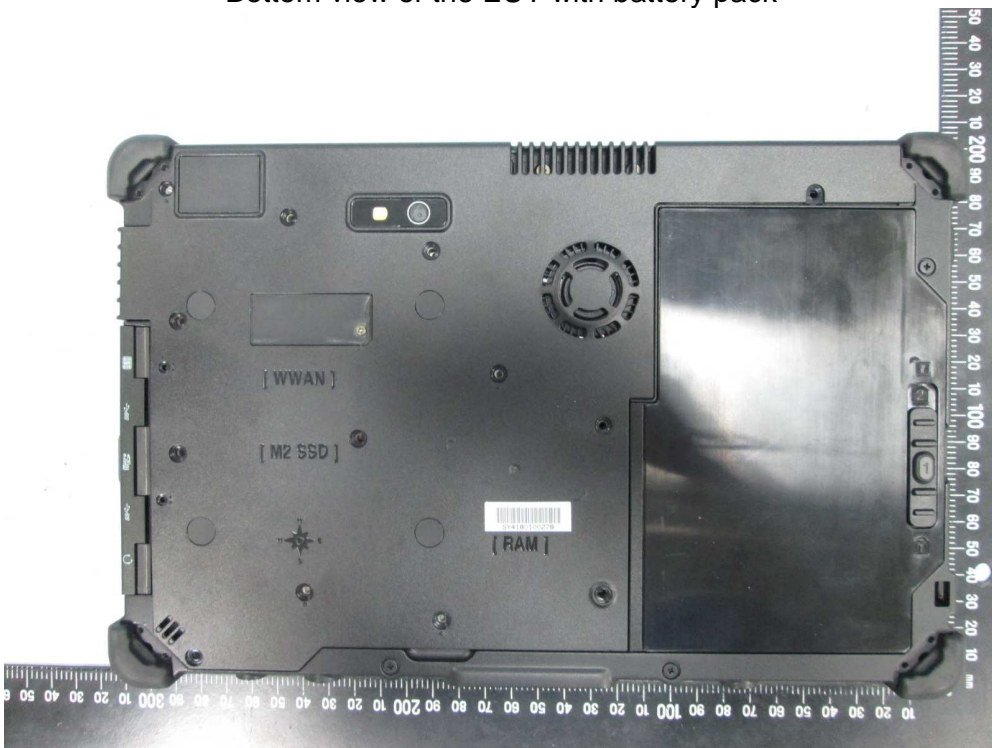
<b>Item No.</b>	<b>Object/part No.</b>	<b>Manufacturer/trademark</b>	<b>Type/model</b>	<b>Technical data</b>
1	CPU	Intel	i5-4200U	1.6 GHz
2	External power supply	FSP GROUP INC.	FSP065-RAB	Input: 100- 240 Vac, 1.5 A, 50- 60Hz; Output: 19 Vdc, 3.42 A
3	Battery pack	FUJIAN UNITED CORPORATION CO., LTD	R11AH	11.1 Vdc, 4.1 Ah, 45 Wh
4	Memory card	Samsung	M471B517QHO -YKO	4 GB
5	SSD	LITEON	PX-64G7GE	64 GB

**Photos of the product:**

Top view of the EUT



Bottom view of the EUT with battery pack

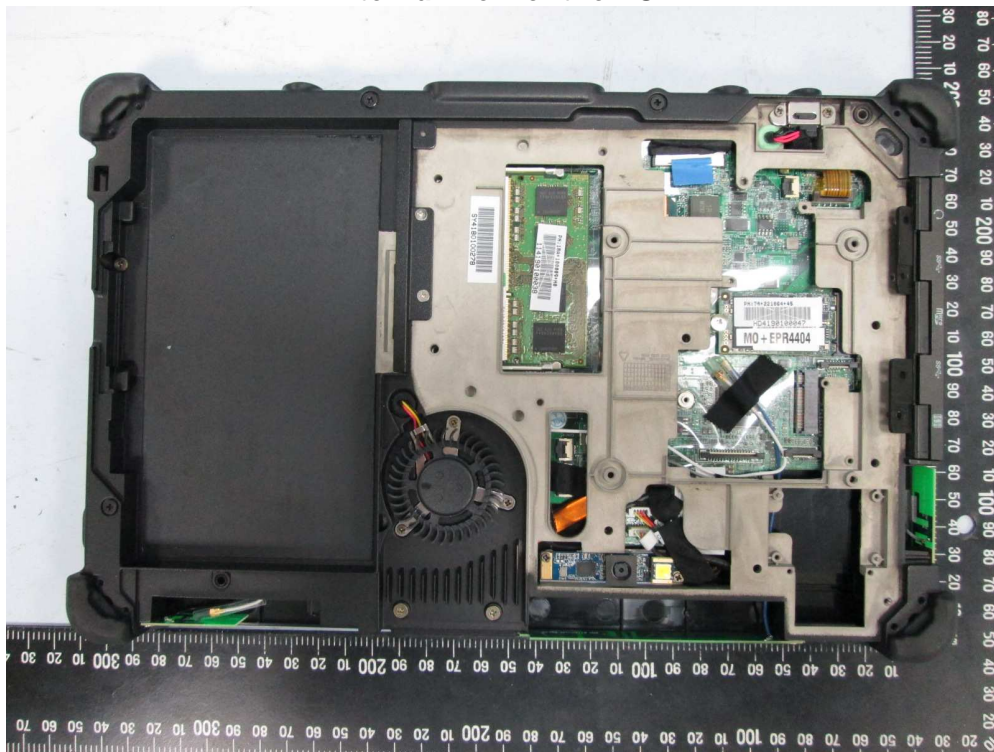




Bottom view of the EUT without battery pack



Internal view of the EUT



Memory card



Top view of SSD



Bottom view of SSD



External power supply





---

**Equipment List**

---

<b>Reg. No.</b>	<b>Equipment Name</b>	<b>Brand Name</b>	<b>Type / Model</b>	<b>Cal. Date</b>	<b>Next Cal.</b>
1	Universal Power	EXTECH	6920	--	--
2	Digital Power Meter	CHROMA	66202	4/9, 2014	4/8, 2015